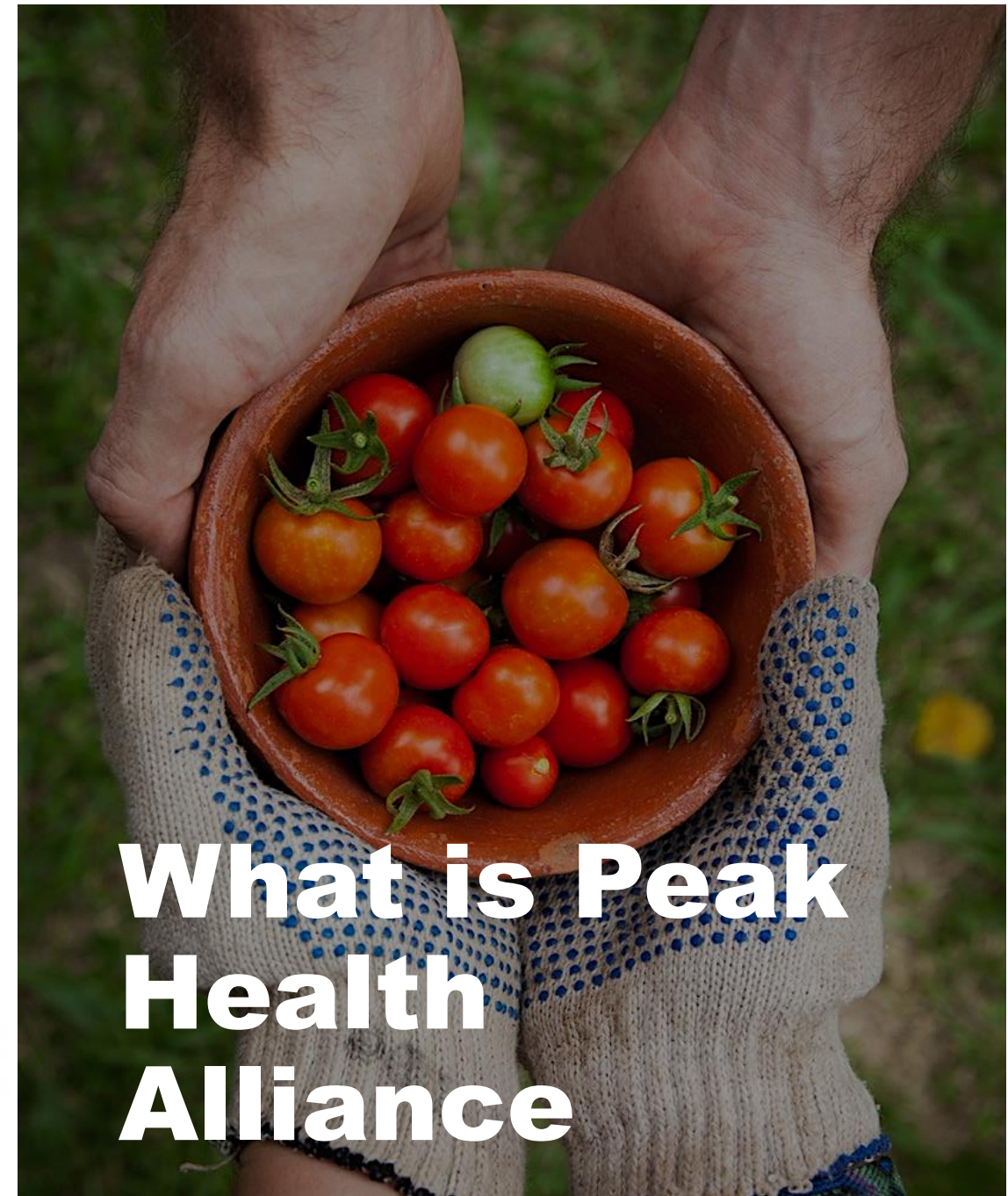


A photograph of four people (two women and two men) seen from behind, hugging each other in a line. They are standing on a beach or dunes, looking out at the ocean under a bright, hazy sunset sky. The warm light of the sun creates a strong lens flare effect across the scene.

We're Better Together.

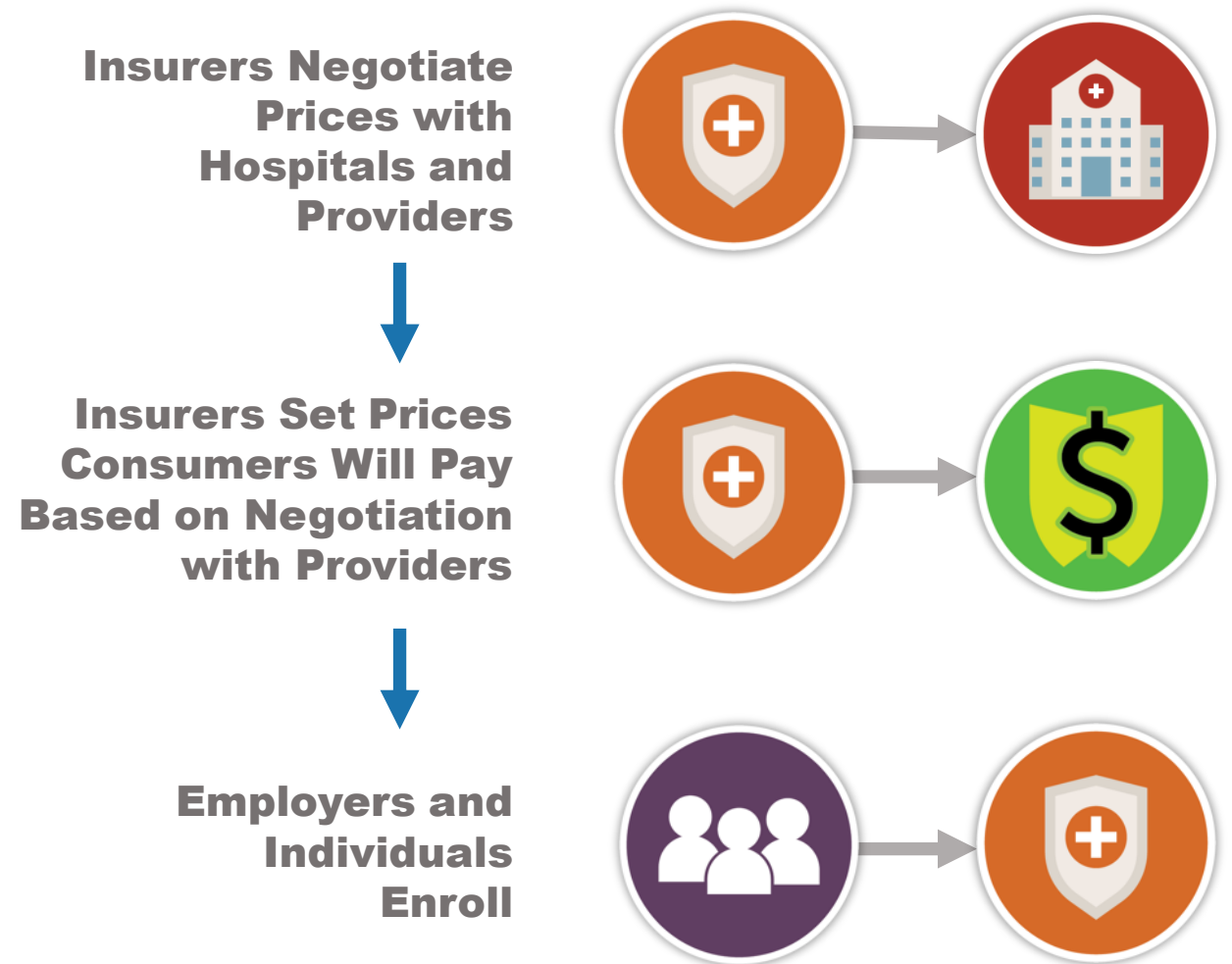


- **Locally-managed non-profit purchasing alliance**
- **Owned by our members, who include individuals, insured and self-funded groups**
- **Licensed and regulated by but operate independently of the State of Colorado**
- **Peak is not an insurance company, TPA, or medical provider**



**What is Peak
Health
Alliance**

The Traditional Model



The Peak Model



Negotiated Fee Schedules

- **Animas Surgical Hospital**
- **Centura Health System statewide with super-rates at:**
 - **Mercy Regional Medical Center**
 - **St. Anthony Summit Medical Center**
- **Children's Hospital**
- **University Hospital**
- **CU Medicine**
- **Denver Health and Hospital Authority (Grand)**
- **Middle Park Health**
- **St. Vincent Hospital**

Saving Money For Our Communities

Estimated Savings for 2021: \$7 Million

County	2020	2021	Reduction
Summit**	\$359.95	\$327.07	9.1%**
Lake	\$526.50	\$327.07	37.9%
Grand	\$526.50	\$327.07	37.9%
La Plata	\$432.35	\$327.07	24.3%
Montezuma	\$452.86	\$327.07	27.8%
Dolores	\$526.50	\$327.07	37.9%
San Juan	\$526.50	\$327.07	37.9%

40-year-old non-smoker who selects the 2nd lowest on-exchange Silver, receives no Advance Premium Tax Credit, and chooses the 2nd lowest on-exchange Silver last year. Factors in monthly membership fee. Does not include other savings. Annual savings based on projected 2021 enrollment.

**On top of approximate 20% reduction in 2020

Plan Highlights

- **\$0 deductibles**
- **Unlimited primary care and specialty care visits**
- **Flat dollar copays that are not subject to deductible**
- **Flat dollar costs for services that are not subject to deductible: MRIs, lab, x-rays**
- **HSA plan options**

Enhanced Mental Health Benefits



Improved Capacity

- **Higher reimbursement rates**
- **Expanded mental health network**
- **Reduced prior authorization hassles**

Increased Access

- **\$0 flat dollar copay**
- **Not subject to deductibles**
- **Unlimited number of outpatient visits**

Contacts

- **Molly Hirshik, Office Manager**
- **molly@peakhealthalliance.org**
- **970-455-0381 ext 104**

- **Elise Neyerlin, Director of Outreach**
- **elise@peakhealthalliance.org**
- **970-455-0381 ext 101**

A photograph of four people seen from behind, embracing each other in a group hug. They are standing on a beach or a similar open area, looking out at a vast, hazy landscape under a warm, golden sunset sky. The sun is low on the horizon, creating a strong lens flare effect that washes over the scene with a warm orange and yellow light. The people are dressed in casual clothing; one person on the left wears a denim jacket, and another on the right wears a patterned shirt.

Thank You.

peakhealthalliance.org

info@peakhealthalliance.org

